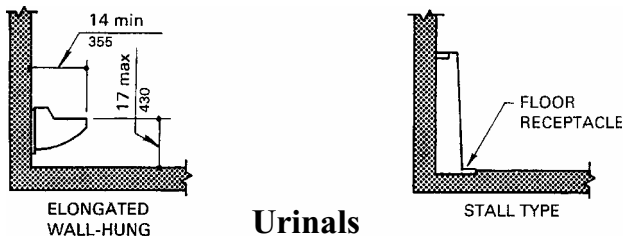


# URINALS

## ANSI 4.18 • ADAAG 4.18

Any toilet or bathing room provided with urinals must have at least one that is low-mounted and with an elongated rim. It must project far enough from the wall to allow a person in a wheel-chair to get close enough to the rim before the Footrests of the wheelchair hit the wall under the fixture.

Urinals that project less than 14 inches generally are not usable by someone using a wheelchair. Urinals with receptacles located in the floor are acceptable. Regardless of the type of Fixture, the flush mechanism must be mounted low enough so that it can be reached by a person seated in a wheelchair.



### Urinals

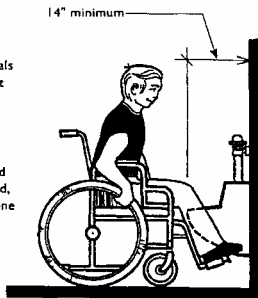
(c) *Urinals*

Fig. 29

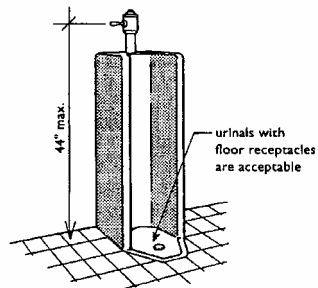
# Acceptable Handicap Urinals

elongated urinals must project at least 14" to be usable

if wall-mounted urinals are used, an elongated one is required



**Elongated Urinal**



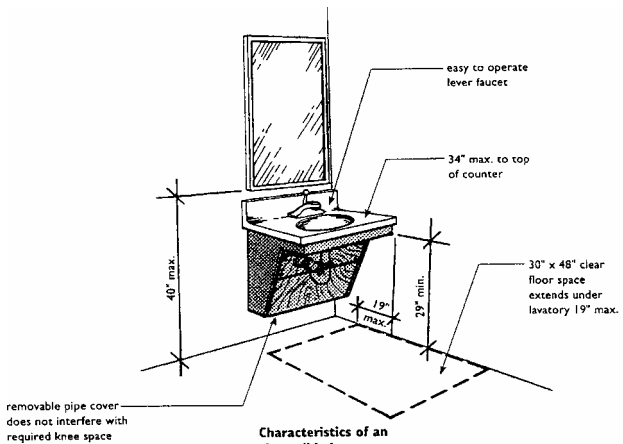
**Floor Level Urinal**

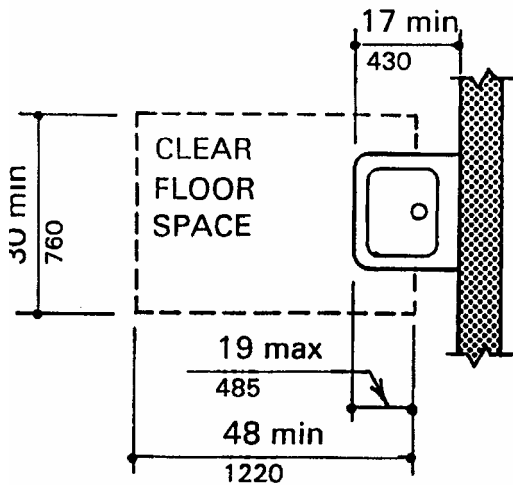
# LAVATORIES AND MIRRORS

## ANSI 4.19 • ADAAG 4.19

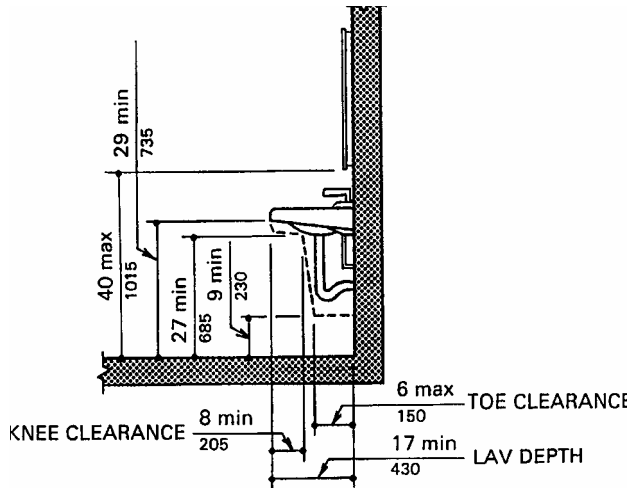
Most toilet and bathing rooms have lavatories and mirrors and at least one of each must be accessible to people with disabilities. The lavatory specifications easily can be met using standard plumbing fixtures and components. There are special “handicapped” lavatories on the market but they are not needed to meet these requirements.

Lavatories in countertops also can be standard fixtures and the counters or cabinets can be of ordinary construction so long as they provide the knee spaces, clear floor spaces, and pipe protection required. It is best if countertops are 32 inches to 33 inches above the floor; they may be a maximum of 34 inches high. It also is helpful if the lavatory bowl is placed as close to the front edge of the counter as possible to make it easier for a seated person to lean over to use the basin and reach faucet controls.

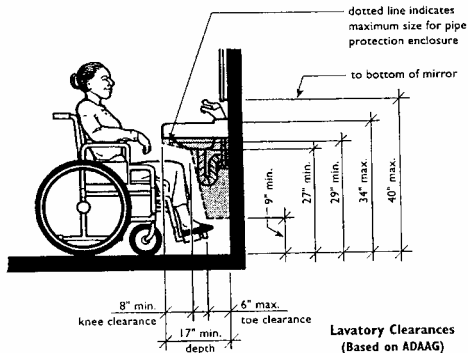




**Fig. 32**  
**Clear Floor Space at Lavatories**



NOTE: Dashed line indicates dimensional clearance of optional underlavatory enclosure.



# Pipe Protection

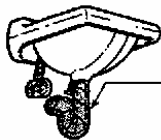
Pipe Protection. Plumbing below the lavatory must be insulated or covered and there must be no sharp or abrasive surfaces below the lavatory. These measures ensure that wheelchair users, some of who may have little or no sensation in *their legs* do not come in contact with hot or sharp surfaces. There are several methods for covering hot water lines and drain pipes, sharp objects and abrasive surfaces below the lavatory. Section 4.19.4 of the ADAAG also states that water and drain lines may be positioned or configured against the wall behind the lavatory to prevent contact by seated person. 7hz may be acwmp13s}

Regardless of the method used, the minimum knee and toe space must be provided. *The* four basic methods of providing protection are:

1. Insulated wrap.
2. Pipe covers.)
3. Protective Panels
4. Integrated fixture Shroud

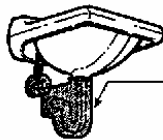
III Illustration are on the following page:

# Pipe Protection



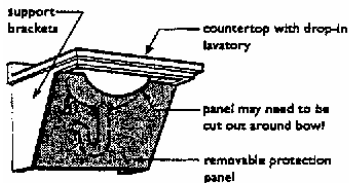
foam or fiber insulation with protective over-wrap on drain, hot water supply, and sharp edges

**Insulation Wrap**



commercially available or custom-made pipe covers that are easily removable for plumbing repairs

**Pipe Covers**



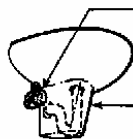
support brackets

countertop with drop-in lavatory

panel may need to be cut out around bowl

removable protection panel

**Protection Panel**



sometimes water lines are not covered by fixture and must be wrapped or otherwise protected

fixture covers drain pipe and provides protection

**"Half Pedestal"  
Lavatory with  
Integral Protection**

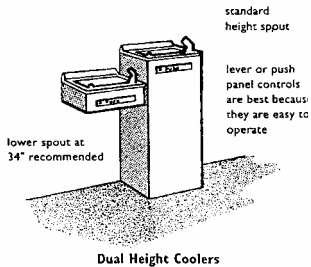
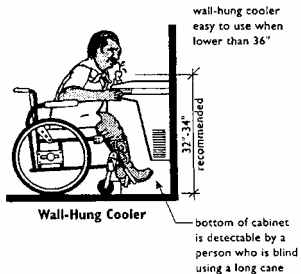
# **DRINKING FOUNTAINS**

## **ANSI 4.15 • ADAAG 4.15**

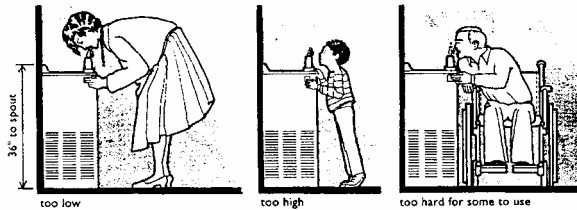
People in wheelchairs need drinking fountains mounted low enough so they can reach the spout. ANSI and ADAAG specify that the spout outlet on an accessible drinking fountain be a maximum of 36 inches above the floor. This is a compromise dimension that actually is too high for some wheelchair users and children and too low for standing people. ADAAG addresses this by specifying that where there is only one drinking fountain on a floor, it must provide water at two levels to accommodate children, people of short stature, people who use wheelchairs, and people who have difficulty bending or stooping. Where there is more than one fountain on a floor, 50 percent must be accessible to people using wheelchairs.

People in wheelchairs must be able to pull up under the fountain or alongside it. Both the ANSI - and ADAAG allow the use of cabinet-type, free-standing water coolers without knee space under them. Because of the twisting and reaching required, some people with disabilities cannot use these parallel approach coolers. Wall or post-mounted units with knee spaces are preferred.

Dual height fountains with one spout at a standard height convenient for standing people and one below the maximum 36-inch height are best. Thirty-two to thirty-four inches is a good range for the low spout. All spouts should be mounted at the front of the fountain.



## Preferred Accessible Water Cooler



**Acceptable But Difficult Water Cooler**

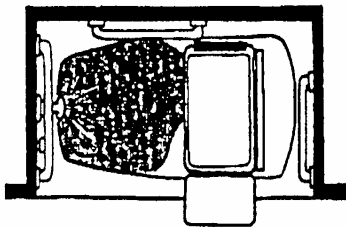
# **TOILET AND BATHING**

## **BATHROOMS**

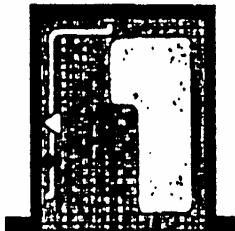
Bathing is one of the most difficult as well as hazardous activities for people with disabilities because of the traditional design of bathrooms and bathing fixtures and the inherent presence of wet, slippery surfaces. There are three different types of bathing facilities that make bathing safer, easier, and, for some people, possible. The three acceptable bathing fixtures that are common to both the ANSI and the ADAAG include a bathtub with a seat, a transfer shower stall with a seat, and a roll-in shower. Where both bathtubs and showers are provided in a bathing/shower room, at least one accessible bathtub or one accessible shower must be provided. However, in the spirit of the ADA and its emphasis on equitable opportunity, the author strongly recommends that at least one of each type of bathing fixture be made accessible so people with disabilities have the same range of choices as do other users.

# TOILET AND BATHING

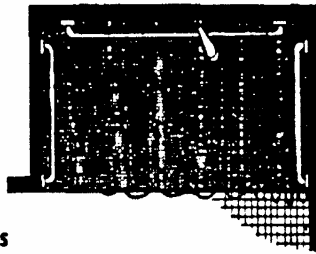
tub with seat



transfer shower



roll-in shower



Three Acceptable Bath Fixtures

Next Page